

YOUR  
GIFT  
MATTERS.



## HOW TO GIVE

Supporting KCS is easy. Please mail your check payable to **Knoxville Choral Society** to P.O. Box 1086, Knoxville, TN, 37901-1086. If you'd like to make a donation in someone's honor, please visit [www.knoxvillechoralsociety.org](http://www.knoxvillechoralsociety.org) for a pledge sheet to fill out and enclose with your check.

### INTERESTED IN DOING MORE?

Find out about the benefits of a flagship sponsorship by calling 865.579.6292 or e-mailing [president@knoxvillechoralsociety.org](mailto:president@knoxvillechoralsociety.org).

You can also support KCS by placing an advertisement in our concert program—your message will reach hundreds of Knoxvilleans each year. E-mail [development@knoxvillechoralsociety.org](mailto:development@knoxvillechoralsociety.org) for more information.



[www.knoxvillechoralsociety.org](http://www.knoxvillechoralsociety.org)

P.O. Box 1086 | Knoxville, TN 37901-1086

865.579.6292 | [info@knoxvillechoralsociety.org](mailto:info@knoxvillechoralsociety.org)



*Bringing  
great choral  
music to East  
Tennessee*

Dr. Eric Thorson, *Conductor*

**SPONSORSHIP  
INFORMATION**

# WHY YOUR SPONSORSHIP IS IMPORTANT

Simply put, there isn't another group like the **Knoxville Choral Society** in East Tennessee. No one else brings such compelling works as Orff's *Carmina Burana*, Beethoven's *Symphony No. 9*, Bernstein's *Chichester Psalms*, or Verdi's *Requiem* to the city of Knoxville and surrounding counties. Without us, Knoxville audiences would rarely experience the powerful, thrilling sound that only a large chorus can create.

**Knoxville Choral Society** is a small arts nonprofit that depends on member dues and donations to survive. The expense of producing three stand-alone concerts per year plus a music competition is considerable—and rising. We apply for and receive grant funding from several generous state agencies and charitable foundations, but that income is not guaranteed from year to year.

Your gift to KCS means we can continue to bring beautiful music to East Tennessee while remaining committed to our goals of furthering choral music by giving scholarships, commissioning works, and reaching out to the community.

[www.knoxvillechoralsociety.org](http://www.knoxvillechoralsociety.org)

## OUR SEASON

Knoxville Choral Society's season runs from **August to May** and typically includes the following events:

**Fall concert** (October/November)

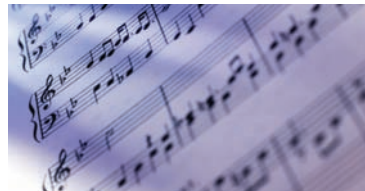
**Clayton Holiday Concerts with the Knoxville Symphony Orchestra** (December)

**Spring concert with Young Classical Musicians Competition winners** (February/March)

**Knoxville Chamber Chorale concert** (March/April)

**Knoxville Symphony Orchestra Masterworks concert** (April/May)

KCS also takes its concerts to surrounding counties, performing in venues such as the Cumberland County Playhouse (Crossville) and Niswonger Performing Arts Center (Greeneville). The Knoxville Chamber Chorale, a small chamber group auditioned from the ranks of the Knoxville Choral Society, also performs at local events such as the Rossini Festival and the Florence Crittenton Greens Tea.



## ABOUT US

Begun in 1951 as the Knoxville Choral Club, the Knoxville Choral Society is a 150-voice auditioned chorus that performs choral masterworks and chamber pieces in a yearly concert series.

KCS also administers the Young Classical Musicians Competition, an annual competition for students ages 9–18 in voice, strings, woodwinds/percussion, and keyboard. Up to four winners receive a cash prize and perform with KCS in our spring concert. Several YCMC winners have gone on to appear on *From the Top*, a public radio program featuring promising young musicians.

Another important part of our mission is providing scholarship money to aspiring choral conductors, musicians and music educators through local colleges and universities, including the University of Tennessee. We also commission new choral works from composers to commemorate special events.

## ARTISTIC STAFF



**Eric Thorson** has been conductor of the Knoxville Choral Society since 1995 and artistic director since 1996. Dr. Thorson is a professor of music and director of choral activities at Carson-Newman College and minister of music at West Hills Baptist Church in Knoxville.



**Bill Brewer** is assistant director of the Knoxville Choral Society and conductor of the Knoxville Chamber Chorale. Mr. Brewer is an associate professor of music at Pellissippi State Community College, where he is the program coordinator for music.



**Danny Brian** is the accompanist for the Knoxville Choral Society. An active chamber musician and a frequent guest soloist with many orchestras, he is the organist for Cokesbury United Methodist Church in Knoxville.